



Victoria Mews

Victoria Crescent,
Burton-on-Trent,

DE14 2QD

£160,000

"THE VERY BEST IN LUXURY LIVING IN BURTON ON TRENT" VICTORIA MEWS is a striking collection of 2,3 & 4 bedroom CONTEMPORARY HOMES set within an exclusive BESPOKE DEVELOPMENT where LOCATION, LUXURY & LIFESTYLE combine with uncompromising quality and meticulous attention to detail..



Property Features

- Luxury Living
- Bespoke Development
- Contemporary Finish
- Help to Buy Scheme
- 860 sq ft
- Ideal FTB
- 2 Bedrooms
- Designer Kitchen
- Incentives Available
- Buy off Plan

Full Description

The Athena at Victoria Mews An exceptional New Home extending to 860 sq ft of living space over 2 floors, designed and executed to an exceptional standard offering the very best in Luxury Living in Burton on Trent...Victoria Mews is a collection of 2,3 & 4 bedroom homes set within an exclusive bespoke development where Location,Luxury & Lifestyle combine to provide ultra modern & sophisticated homes with uncompromising quality & meticulous attention to detail overlooking a central green

Turning heads in DE14 and getting noticed this new Flagship development is now available to Reserve your Plot off Plan and have a choice from a Designer range of Kitchens and Bathrooms which will be equipped to an exceptional standard with the finest quality fittings and will be ready for you to move into and really make your own. The Athena is an exceptional starter home offering a unique

synergy of volume and natural light with home entertaining at its core with the large lounge,exceptional fitted kitchen and 2 double bedrooms on the first floor with an en- suite complementing the master bedroom and main bathroom and a low maintenance rear garden.

Burton-upon-Trent is a town on the River Trent in East Staffordshire, close to the border with Derbyshire and about 30 miles north east of Birmingham. The National forest encompasses the town and extends Eastwards to Ashby de la Zouch.

For centuries brewing was Burton's major trade, and it is still an important part of its economy today. With brewing being so ingrained with the town, it is probably not surprising that Burton is also home to CAMRA's National Breweriana Auction that takes place each October, latterly in the town hall. The town is still a lively centre of craft brewing.

Burton-upon-Trent boasts three excellent shopping centres, with a good mix of specialist shops and the country's leading retailers. The Victorian town hall in all its Gothic splendour, is the ideal venue for concerts, exhibitions and other functions. The Brewhouse Arts Centre, is a multi-purpose arts building incorporating 230 seat theatre, gallery, studios, media centre, cinema, darkroom and a delightful bar bistro in which to relax. For public transport, the town is served by Burton-on- Trent railway station with two platforms, with Bus routes at the end of the road going to the town centre and Hospital, Swadlincote and Ashby de la Zouch. Within travelling distance are Bretby Golf club, Burton Tennis Club, Leander Rowing Club, Meadowside Swimming and Leisure

MH

MAKE HOMES





THE ATHENA

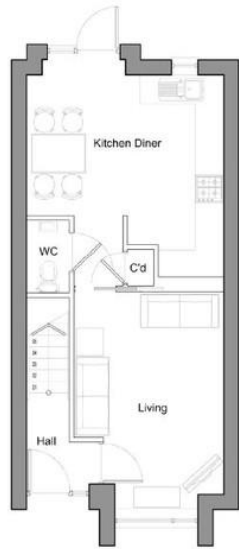
VICTORIA MEWS IS A STRIKING COLLECTION OF 2,3 & 4 BEDROOM CONTEMPORARY HOMES, WHERE LOCATION, LUXURY & LIFESTYLE COMBINE WITH UNCOMPROMISING QUALITY AND METICULOUS ATTENTION TO DETAIL.

An exceptional starter home combining a unique synergy of volume & natural light with home entertaining at its core.

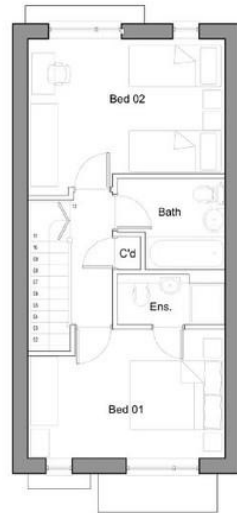
860 sq ft of living space provides spacious 2 bedroom, 2 bathroom accommodation of the highest order.

Economical to run & maintain, making this the ideal FTB or Buy to Let investment, with a low maintenance garden whilst overlooking the central green area.

Call us now to book & arrange your tailored visit to the Marketing Suite to discuss your requirements further and reserve your plot today.



GROUND FLOOR



FIRST FLOOR

DIMENSIONS

GROUND FLOOR

Kitchen/dining	4290mm x 4400mm	14'1" x 14'5"
Lounge	3260mm x 4710mm	10'8" x 15'5"
WC	930mm x 1600mm	3'0" x 5'3"
Hall Space	1570mm x 2130mm	5'2" x 7'0"

FIRST FLOOR

Bedroom 1	4290mm x 2800mm	14'1" x 9'2"
Bedroom 2	4290mm x 3400mm	14'1" x 11'2"
Bathroom	2350mm x 2000mm	7'5" x 6'6"
En-Suite	2350mm x 1100mm	7'8" x 3'7"
Landing	910mm x 2910mm	3'0" x 9'6"

11 Astley Way
Ashby-De-La-Zouch
Leicestershire
LE65 1LY

www.whiteheadsestates.co.uk
info@whiteheadsestates.co.uk
01530 353170

Agents Note: Whilst every care has been taken to prepare these sales particulars, they are for guidance purposes only. All measurements are approximate and for general guidance purposes only and whilst every care has been taken to ensure their accuracy, they should not be relied upon and potential buyers are advised to recheck the measurements