

Plot 4
School Street
Oakthorpe
DE12 7RE

£650,000

****AVAILABLE FOR SUMMER COMPLETION**** A brand new HIGH SPECIFICATION 3 storey 6 bedroom detached family home forming part of a SMALL BESPOKE DEVELOPMENT of 4 properties enjoying OUTSTANDING VIEWS to the rear, situated within the heart of the National Forest, LAST 2 PROPERTIES AVAILABLE



Property Features

- Brand New
- Detached Home
- High Specification
- Bespoke Development
- Rural Views
- 6 Bedrooms
- 3 Bathrooms
- Living Kitchen
- Excellent Plot
- Landscaped Garden

Full Description

Forming part of the Field View development, a small bespoke scheme of just 4 houses, with the last two remaining plots just released and available for summer completion, this is a great opportunity to acquire a high specification 6 bedroom detached family home by local builders JA Davis Building contractors, who working with local architects have created a truly unique, individual detached family home of 2486 sq ft incl the garage, perfectly positioned to take advantage of the fine countryside views to the rear. The property will enjoy a stylish interior with a contemporary design to the rear featuring a full height glazed window from the master bedroom designed to take full advantage of the open aspect over the adjoining fields. Internally the property will feature a renewable energy air source heat pump central heating system with underfloor heating to the ground floor, and resident 7 double glazing ensuring the property is both

energy efficient and low in external maintenance

With oak doors, complementary tiling, a bespoke fitted kitchen with quartz worktops and luxury bathrooms you will be able to walk straight in with completion anticipated for summer 2021.

A spacious entrance hall awaits as you enter, cloakroom/wc, open plan lounge with feature fireplace, living kitchen that will enjoy a bespoke range of units with integrated appliances and quartz work tops & utility room. On the first floor are four bedrooms including the feature master bedroom with full height window taking advantage of the fine rural aspect and luxury en-suite, main bathroom with two further bedrooms & bathroom adding great versatility on the second floor. The gardens will be landscaped with patio areas designed for outdoor entertaining and taking full advantage of the wonderful rear aspect over the adjoining fields.

Perfectly positioned on School Street in the centre of the village, you can easily embrace the qualities of village life within Oakthorpe, a popular sought after village, with a great local primary school just opposite, village shop and village hall, many country walks surround the village and being in the National Forest, conkers, Moira Furnace and Hicks Lodge are right on your doorstep. Measham and Ashby de la Zouch are close by together with the M42 leading to the midland motorway network with Tamworth and Birmingham in close proximity



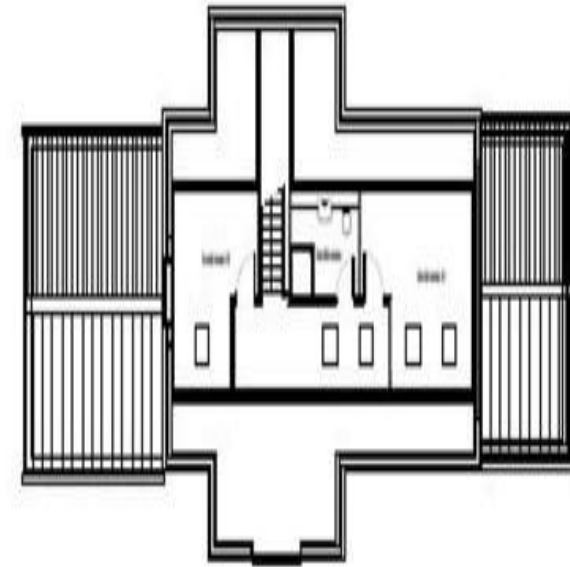




Plot 4 - Ground Floor Plan
Household Number: 01207 246321



Plot 4 - First Floor Plan



Plot 4 - Second Floor Plan

8 The Pass Courtyard
43 Market Street
Ashby-De-La-Zouch
Leicestershire
LE65 1AG

www.whiteheadsestates.co.uk
info@whiteheadsestates.co.uk
01530 353170

Agents Note: Whilst every care has been taken to prepare these sales particulars, they are for guidance purposes only. All measurements are approximate and for general guidance purposes only and whilst every care has been taken to ensure their accuracy, they should not be relied upon and potential buyers are advised to recheck the measurements